



WILLIAMDALE

COLLECTION TWO:



Project: [Williamdale///001-Villanelle>](#)



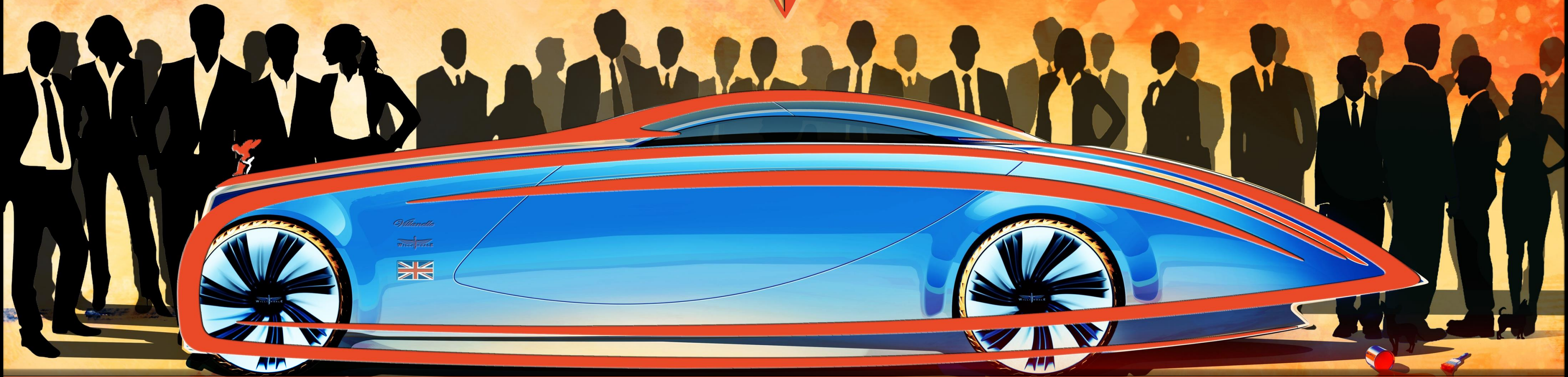
Introducing Villanelle.  
A spiritual successor to the 1923 Rolls Royce round-door...



*Dale Peter Brewer*



# WILLIAM DALE



Villanelle is quite simply the grandest, most luxurious, most statemental car ever created; a \$6m 'land yacht'; a 200mph EV with 500-mile range, crafted from the finest materials on earth.

*Dale Peter Brewer*



# WILLIAM DALE

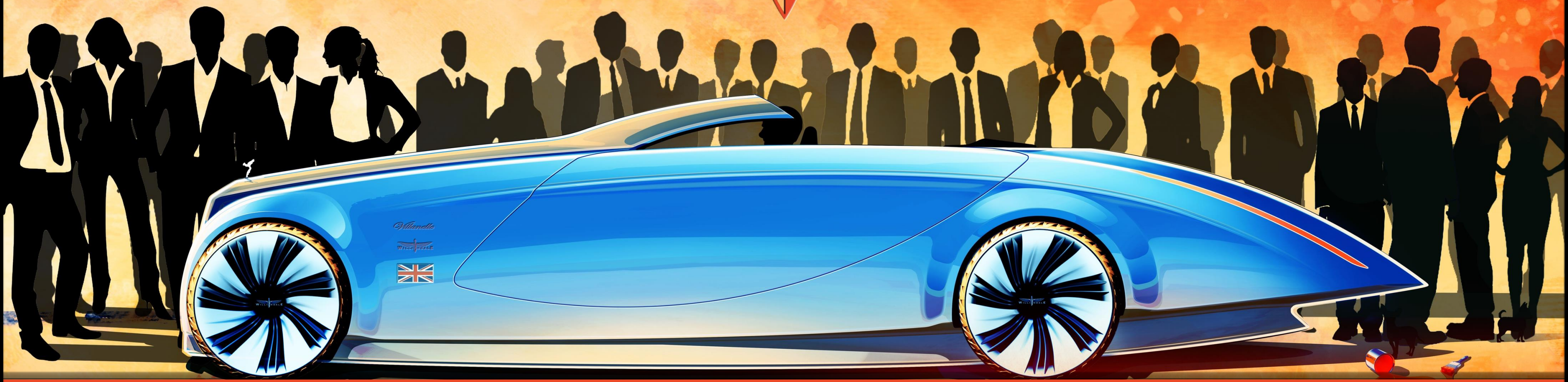


Elegance & Presence, but not just a coupe...

*Dale Peter Brewer*

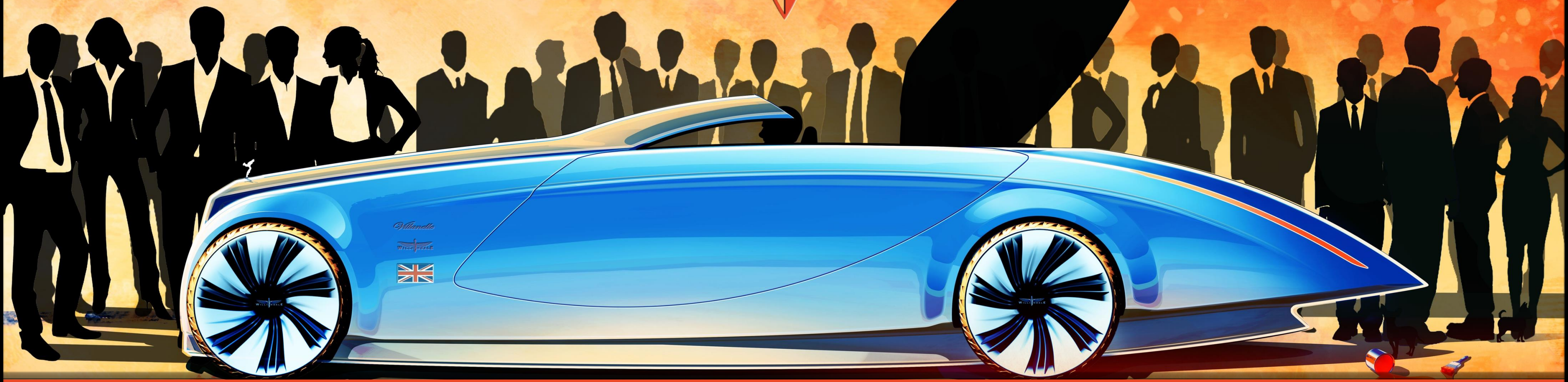


# WILLIAM DALE



Roof rotates down into rear, for open top cruising...

*Dale Peter Brewer*



Rotation theme continues for door opening...

*Dale Peter Brewer*



With both doors uniquely rotated up, Villanelle evokes the character of the 'spirit of ecstasy' on the front.

*Dale Peter Brewer*



## Collection two: Villanelle.



**Villanelle is the ultimate automotive statement.**

**Award winning design inspired by the Rolls Royce 'Round Door' of 1923.**

**Credited influence on both the Rolls Royce Sweptail and the Mercedes Maybach Exelero.**

**A true 'collector piece', offering unsurpassed luxury, presence and style.**

**EV capable of >200mph and >500 miles range.**



**Quarter-scale display model is the fixed coupe, of which just nine will ever be made.  
Nine convertible and nine speedster variants will complete the collection.**